



A VIEW  
LIKE  
NO OTHER

# THE ROWHOUSE VAIL, COLORADO

The unique RowHouse sitting at the base of Vail Mountain has been undergoing a major renovation, adding another story and bringing the front facade out due to updated zoning for the RowHouses in Vail Village. Homeowner, Erickson Shirley wanted to maximize the views and create south facing decks with exposure to the Vail Village community.

“Confined by party walls on the east and west, we really needed to maximize the natural light and views to the north and south”, explained Millie Aldrich, Architect. “The southern facing two story living room windows and large stairwell skylight bring natural light into the middle of the house. I wanted the house to step back as the floors went up to create a welcoming and inviting relationship as you approach from the street. The very top is a roof deck with a 360-degree view. The north side of the house faces Gore Creek and has so much exposure to the river activities, like fly fishing, kayaking, SUP, and hiking. She wanted to capture the view and the sound from the river. The Sky-Frame Classic has large sliding doors with an integrated handle and minimal stile and rail allowing the wall to disappear and bring the outside in. We call the upper bedroom the ‘bird’s nest’ because you feel like you are in the tree tops looking down on the river. The wall slopes slightly out over the river and really emphasizes that connection. The Sky-Frame SLOPE product was a perfect solution. I sourced the Sky-Frame Slope, Classic and Plain product solutions from Sky-Frame of Switzerland. I partnered with Signature Windows+Doors, Colorado’s exclusive Sky-Frame expert to design, specify and install the Sky-Frame SLOPE, an inclined massive glass wall, with integrated frame that is easy and intuitive to operate.”

**MILLIE ALDRICH**  
PRINCIPAL OF PURE DESIGN STUDIO, ESTABLISHED 2007  
REGISTERED ARCHITECT, AIA



Millie Aldrich was excited to work with homeowner, Erickson Shirley, and General Contractor, Guy Cuccia, on a new, yet familiar project that they had worked on 15 years ago. Aldrich’s philosophy is to build relationships with homeowners to better understand how they live, and help bring their vision to life.

FEATURING THE FIRST SKY-FRAME SLOPE IN NORTH AMERICA.



Signature Windows+Doors offers the industry’s most innovative, durable, highest quality solutions for window, door and glass systems. We understand that every project, residential and commercial, is unique and we only use products that will meet your exact design specifications to ensure lasting performance. Our very own highly rated, certified experts install Signature Window+Door solutions.

When it comes to your vision, compromise is not an option. Since 1981, Signature Windows+Doors has been Colorado’s destination for high-quality brands with uncompromising service, expert installation, and design.

Our company is led by **GWÉNAËL HAGAN** – President, **RICK GARHART** – Vice President and **BEN ANASTASIO** – Vice President of Installation Services. We work with builders, architects, designers and homeowners to bring your vision to life. Signature Windows+Doors is the exclusive expert and representative of Sky-Frame in Colorado. The Vail RowHouse is the first Sky-Frame Slope installation in North America.

## OUR SHOWROOMS:

### DENVER

201 University Boulevard  
Denver, CO 80206

P: 303.783.9300

### BOULDER

3002 Sterling Circle, Suite 101  
Boulder, CO 80301

P: 303.442.4277

### ASPEN

207 Basalt Center Circle  
Basalt, CO 81621

P: 866.386.0585

THE **ROWHOUSE** ALSO USES SKY-FRAME **CLASSIC** AND SKY-FRAME **PLAIN**

### A VIEW, NOT A WINDOW

Sky-Frame's position as the world's leading sliding window system was achieved through single-minded commitment coupled with profound technical, architectural and spatial design expertise. With the location of development and production operations in Switzerland, Sky-Frame products are now featured in several thousand properties across all continents.

# SKY-FRAME



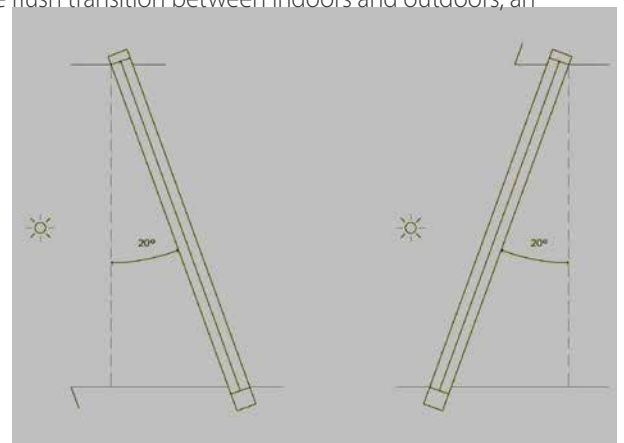
		CLASSIC Straight sliding doors	ARC Curved sliding doors	SLOPE Inclined sliding doors	PIVOT Pivot door
OPTION Track system	<b>Original</b> Visible transition	●	●	●	
	<b>Plain*</b> Hidden, seamless transition	●			
TECHNOLOGY Glazing	<b>1</b> <b>Sky-Frame 1</b> Single glazing	○			
	<b>2</b> <b>Sky-Frame 2</b> Double-glazed insulating glass	●	●	●	●
	<b>3</b> <b>Sky-Frame 3</b> Triple-glazed insulating glass	○	●	●	●
FEATURES	<b>Fly</b> Insect screen	○			
	<b>Drive</b> Electric drive	●	*	*	
	<b>Guard</b> Increased anti-burglary protection	●	*	*	*
	<b>Pocket</b> Hidden sliding door	●	●	*	
	<b>Inline</b> Flush-fitted glass panels	○	*	*	
	<b>Gun*</b> Bulletproof version	○			
	<b>Color</b> Customization	●	●	●	●

● standard ○ only with the Original option \* on request

### LIVING WITH SKY-FRAME

Living with Sky-Frame means living in your own special dream home. The frameless sliding doors are the key to exceptional architectural creations and, thanks to the flush transition between indoors and outdoors, an unbounded spatial experience with spectacular vistas.

*“Instead of inserting a window into a wall, the whole wall becomes a window.”*



THE **ROWHOUSE** ALSO USES SKY-FRAME **CLASSIC** AND SKY-FRAME **PLAIN**

Sky-Frame is responsible for developing what is widely considered to be the premier sliding door system in the world in terms of visual appeal, performance and longevity. The Sky-Frame approach fulfills both the demand for conventional frame thicknesses and the modern requirements of today's standards. Its profile thickness of just 3/4" conveys the

***"Sky-Frame frameless sliding doors are the perfect combination of Swiss engineering and timeless appeal."***

minimalist image of a sliding window born of modernity, whilst simultaneously providing a sophisticated solution with regards to building physics and technology. Sky-Frame allows you

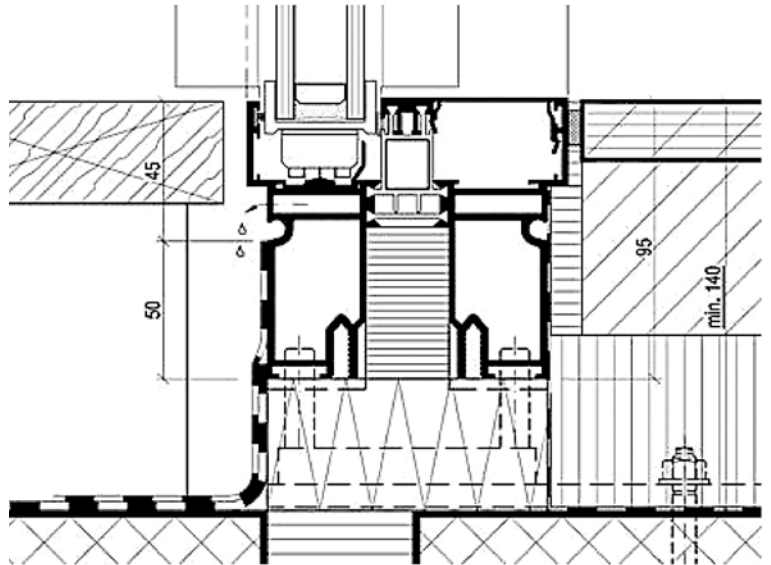
to dissolve the boundaries between inside and out to give the room the greatest transparency possible. Seeing a transition of this nature at floor level is in itself an experience. And, with the ceiling and wall joints just as flush, you really can bring the outside indoors. Sky-Frame is a thermally insulated aluminum system for sliding windows and glazing with a material quality equal to EN AW-6060 T66 in accordance with EN 755. With the introduction of Sky-Frame 3, the bar has again been raised on thermal performance.

Our product design is based on fully-recessed outer-frame construction resulting in flush integration of adjacent finishes at the head, jamb, and threshold, combined with vertical interlocking mullions (stiles) with a minimum face-width of 20mm (~3/4"). Where aggressive wind loads and structural demands are present we offer concealed, internally-mounted carbon-fiber reinforcements within 3/4" mullions, or steel reinforced profiles (also internally-mounted and concealed) with a face-width of 28mm (1-1/8").

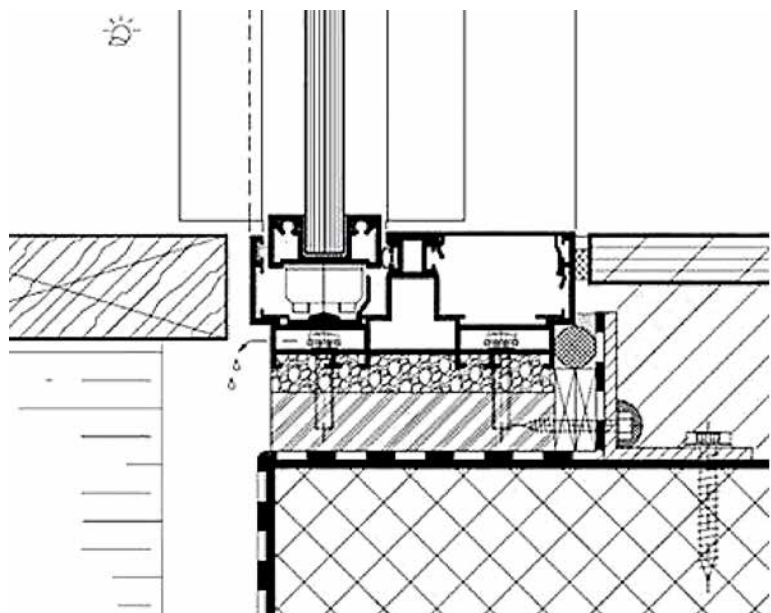
When dust or debris collects on the sill of our doors, the integrated felt-blocks at the front of each leading roller carriage sweep the tracks with every pass. The result is a continuously clean track with no maintenance requirements and a high level of product longevity.

Regarding details, the main concern is typically accommodations for the sill profile. Below you will see two options. The first one requires roughly 5 1/2" of floor build-up. This option is far better for adjust-ability but not all projects can support 5 1/2". The second one requires roughly 3" (75mm to be exact) and it is not as adjustable and generally more difficult to work with and used more for retrofits and remodels where new construction is not an option.

**OPTION 1:**  
**RECOMMENDED FOR NEW CONSTRUCTION:**  
REQUIRES 5 1/2" FLOOR BUILDUP



**OPTION 2:**  
**FOR SHALLOW FLOOR BUILD-UP OR RETROFITS:**  
REQUIRES 3" FLOOR BUILDUP





### SELF-CLEANING DESIGN OF TRACK / ROLLERS:

- Offers dual-axis wheelset design atop a peak-rail which self-centers the panel along the track.
- Felt-block at front of roller carriage for sweeping function with every single pass.
- Replaceable design of felt block allows for longevity of product due to continued protection of rollers against debris.
- Thermoplastic design adds to thermal efficiency versus an all-metal chassis.
- Rubber shims atop carriage absorb vibrations and also offer height adjustment of glass panel in increments of 1mm.
- End connections allow for daisy-chain of additional roller for heavier panels.

## CONTACT SIGNATURE WINDOWS+DOORS

INNOVATION | IMAGINATION | INSTALLATION

### YOUR NEW DESIGN PARTNER

Whether your project is commercial or residential, we offer Colorado's top windows, interior and exterior doors, and skylights.

### WE OWN THE OPENING

We specify products that meet your design and performance criteria, and detail installation standards that will stand the test of time.

### OUR SERVICE GUARANTEE

We guarantee our certified installation with a 10-year warranty and responsive service after the sale to ensure long-term value.

Contact **SIGNATURE WINDOWS + DOORS** to design your next project with innovative windows, doors and glass wall systems. Or visit our website to learn more: [signaturewindows.CO](http://signaturewindows.CO).

#### DENVER

201 University Boulevard  
Denver, CO 80206

P: 303.783.9300

#### BOULDER

3002 Sterling Circle, Suite 101  
Boulder, CO 80301

P: 303.442.4277

#### ASPEN

207 Basalt Center Circle  
Basalt, CO 81621

P: 866.386.0585



INNOVATION | IMAGINATION | INSTALLATION